

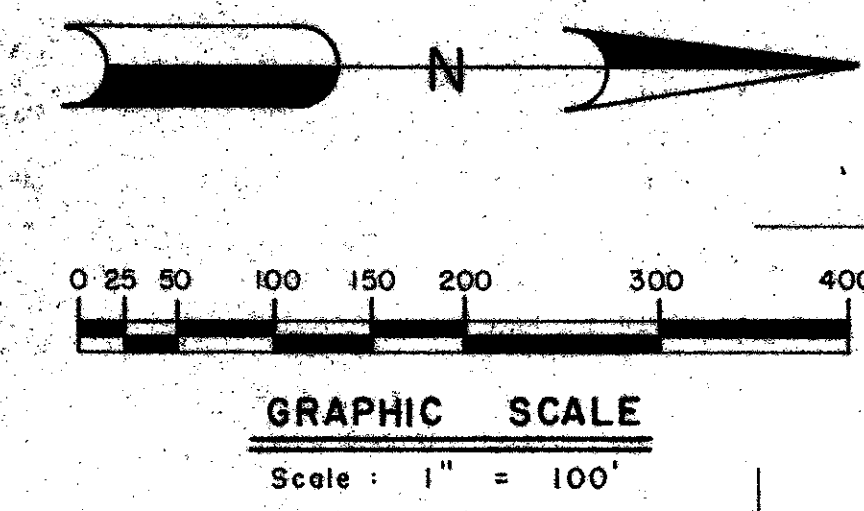
49/161

161

MISSION BAY PLAZA

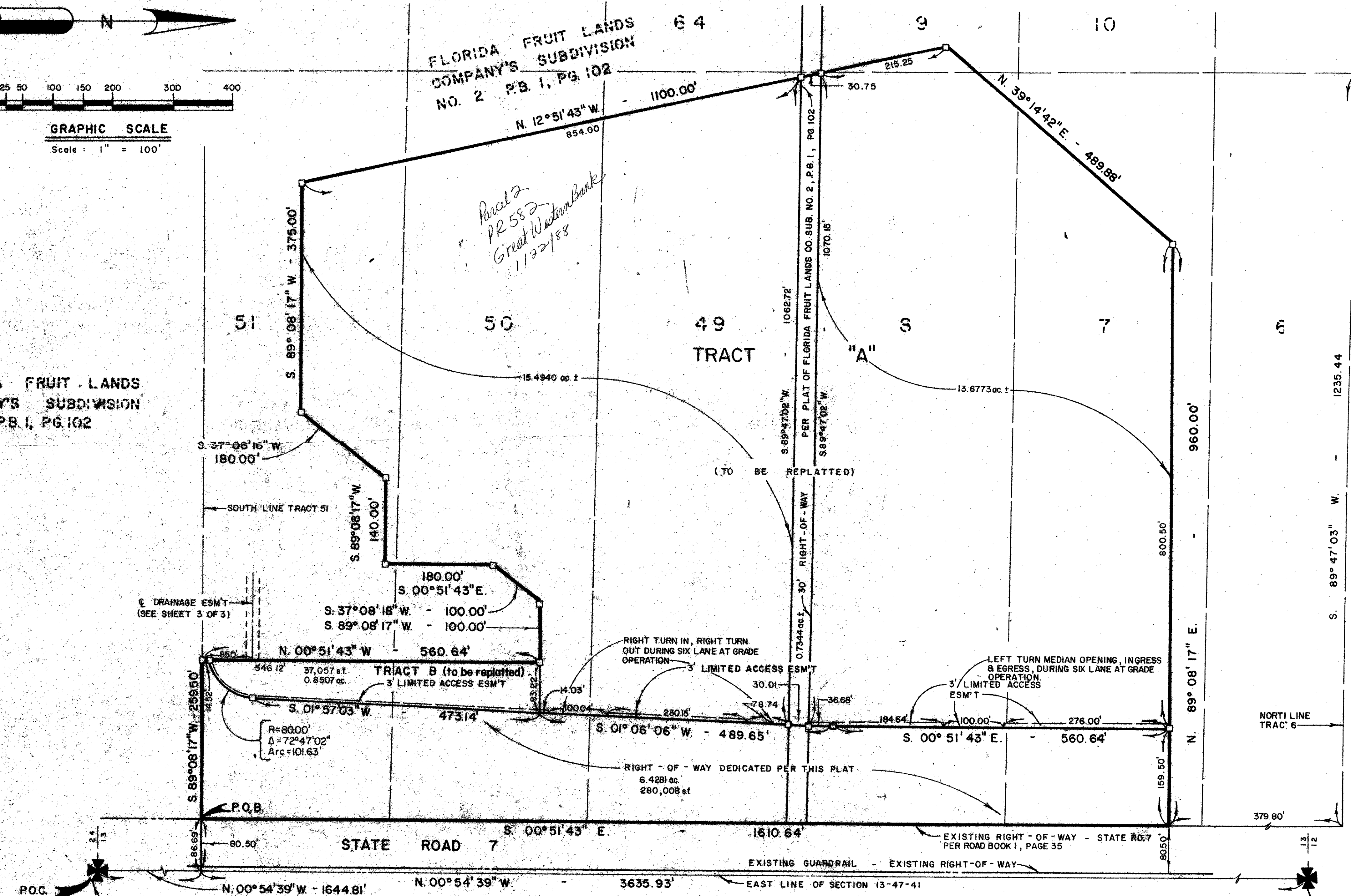
IN SECTION 13, TOWNSHIP 47 SOUTH, RANGE 41 EAST, PALM BEACH COUNTY, FLORIDA BEING A REPLAT OF A PORTION OF TRACTS 7, 8, 9, 49, 50 51 & 52 OF FLORIDA FRUIT LANDS COMPANY'S SUBDIVISION NO. 2 AS RECORDED IN PLAT BOOK 1, PAGE 102. PALM BEACH COUNTY, FLORIDA.

SEPTEMBER, 1984
SHEET 2 OF 3 SHEETS



FLORIDA FRUIT LANDS
COMPANY'S SUBDIVISION
NO. 2 P.B. 1, PG. 102

FLORIDA FRUIT LANDS
COMPANY'S SUBDIVISION
NO. 2 P.B. 1, PG. 102



SURVEYOR'S NOTES

- All P.R.M.'s bear the registration number 3864 shown thus - □ P.R.M.
- The bearings shown hereon are based on a bearing of N. 00° 54' 39" W. on the East line of Section 13-47-41.

13/47/41
 SUBDIVISION = Mission Bay Plaza
 BOOK 49 PAGE 161
 FLOOD ZONE B FLOOD MAP # 100B
 CHAD # 28 ZONING CG
 USE LARGE SCALE SURVEYING CODE 33433
 PUD NAME N/A

P.O.C. Southeast Corner Section 13-47-41 Fnd. Palm Bch. Co. Brass Disc in Conc.

Northeast Corner Section 13-47-41 Found Palm Bch. Co. Brass Disc in Conc.

49/161 0454.301

MISSION BAY PLAZA

THIS INSTRUMENT PREPARED BY:
MICHAEL T. KOLODZIEJCZYK
P.L.S. 3864 STATE OF FLORIDA
LAWSON & NOBLE, INC.
ENGINEERS - PLANNERS - SURVEYORS